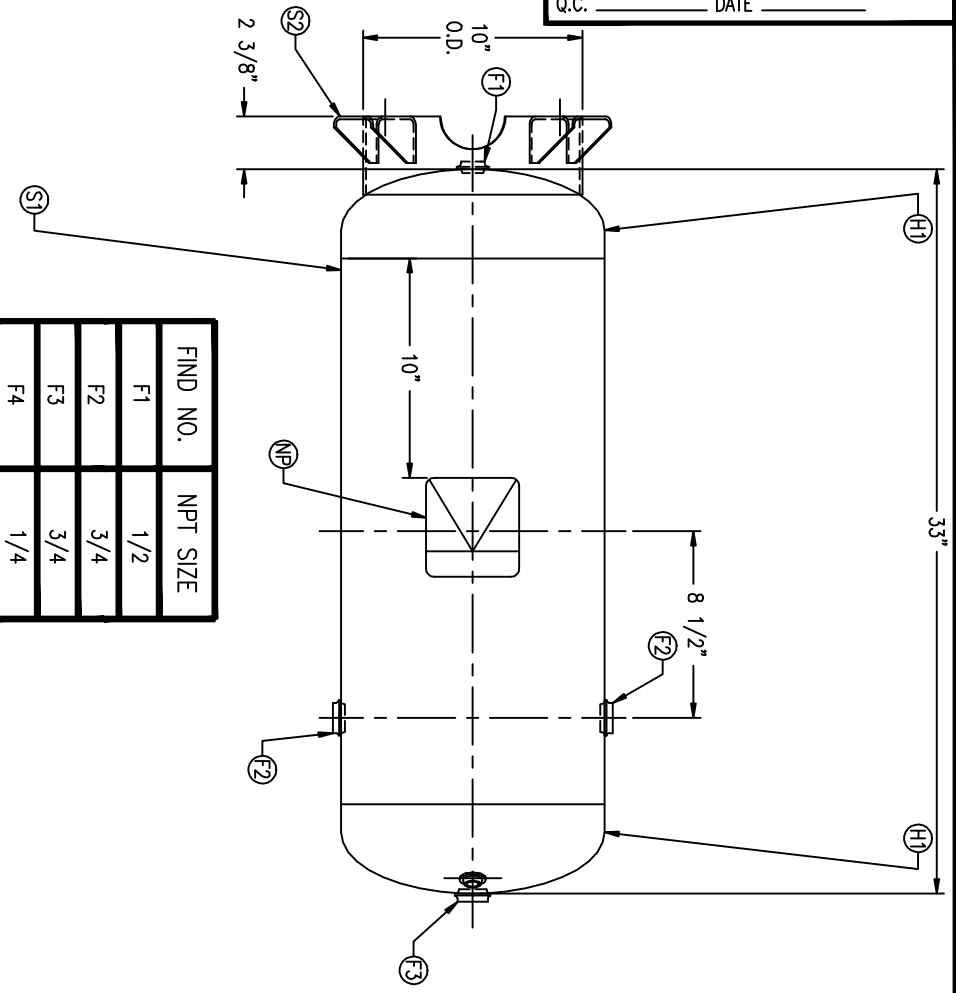


CODE/ADDENDA _____ APPROVED
 RELEASED FOR PRODUCTION
 Q.C. _____ DATE _____



FIND NO.	NPT SIZE
F1	1/2
F2	3/4
F3	3/4
F4	1/4

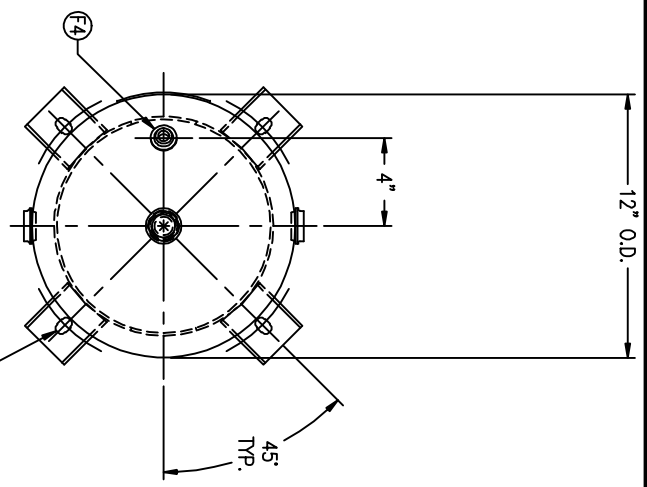
SYM	DATE	BY	REVISION	APP	XREF	REV.
					C988	B
					C988	

NOTES

SPECIFICATIONS

O.D. 12 LGTH. 33
 MAWP 300 PSI @ 650 °F
 CRN H8368.1234567890
 WELD DETAILS: M-1932
 STD. TOLERANCES (UNLESS OTHERWISE NOTED): M-2461

GAL. 15
 WT. 60#
 CODE: ASME SEC. VIII DIV. 1
 LATEST EDITION & ADDENDA



9/16" X 7/8" SLOT
 ON A 12 3/4" BOLT
 CIRCLE, TYP. 4 PLCS.



VERTICAL AIR RECEIVER

DRAWN BY _____ DATE _____ SCALE: NONE
 APP. BY _____ DATE _____ DRAWING NO. 302403