

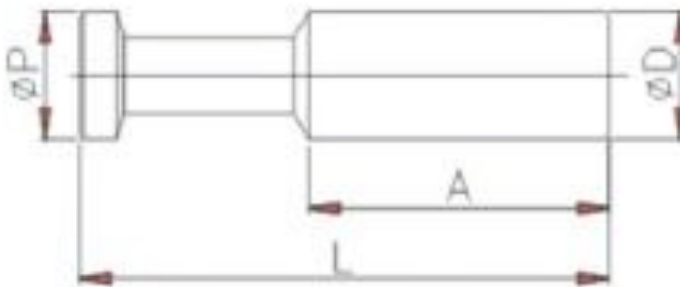
Push to Connect Fitting - Plug (PP)

Inch Tube Specifications (Refer to Diagram Below)

MODEL	ΦD	ΦP	L	A
PP 5/32	5/32	5	28	15
PP 3/16	3/16	6		16
PP 1/4	1/4	7	33	17
PP 5/16	5/16	9	36	18
PP 3/8	3/8	11	43	23
PP 1/2	1/2	13	44	24

**All Whole Numbers = Millimeter (MM)

Diagram - Plug (PP)



Metric Tube Specifications (Refer to Diagram Above)

MODEL	ΦD	ΦP	L	A
PP 04	4	5	28	15
PP 06	6	7	33	17
PP 08	8	9	36	18
PP 10	10	11	43	23
PP 12	12	13	44	24
PP 16	16	17	50	28

**All Whole Numbers = Millimeter (MM)