

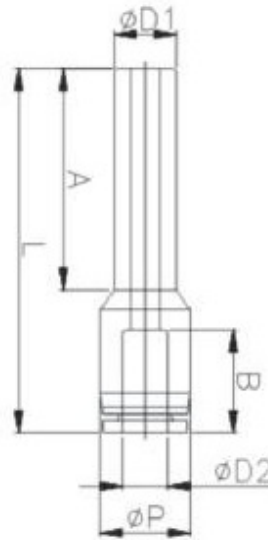
Push to Connect Fitting - Plug-In Reducer (PGJ)

Inch Tube Specifications (Refer to Diagram Below)

MODEL	ΦD1	ΦD2	ΦP	L	A	B	ORIFICE
PGJ 1/4-5/32	1/4	5/32	11.0	40.4	23.5	15	3.4
PGJ 5/16-5/32	5/16	5/32	11.0	39	24.5	15	5.0
PGJ 5/16-1/4		1/4	13.0	42	26.1		4.0
PGJ 3/8-1/4	3/8	1/4	13.0	41.1	27	18	5.6
PGJ 3/8-5/16		5/16	14.6	45.3	25.8		6.5
PGJ 1/2-1/4	1/2	1/4	13.0	39.8	26.4	15	5.7
PGJ 1/2-5/16		5/16	14.6	43.4	26.8	18	7.0
PGJ 1/2-3/8		3/8	18.0	54.5	27.5	22	8.0

**All Whole Numbers = Millimeter (MM)

Diagram - Plug-In Reducer (PGJ)



Metric Tube Specifications (Refer to Diagram Above)

MODEL	ΦD1	ΦD2	ΦP	L	A	B	ORIFICE
PGJ 06-04	6	4	11	38.5	23.7	7.4	2.8
PGJ 08-04	8	4	11	39	24.5	7.4	5.0
PGJ 08-06		6	13	42	26.1	7.9	
PGJ 10-06	10	6	13	41.1	27	7.9	7.0
PGJ 10-08		8	14.6	45.3	25.8	9.3	
PGJ 12-06	12	6	13	39.8	26.4	7.9	9.0
PGJ 12-08		8	14.6	43.4	26.8	9.3	
PGJ 12-10		10	18	54.5	27.5	12.2	

**All Whole Numbers = Millimeter (MM)