

DRYSPELL PLUS

HEATLESS REGENERATIVE DESICCANT AIR DRYERS

Pneumatic*Plus*

Mailing Address:
4733 Torrance Blvd #902
Torrance, CA 90503

Warehouse Address:
1330 E. 223rd St # 505
Carson, CA 90745

Phone: (800) 658-3579
Email: Support@pneumaticplus.com
Mon-Fri 9:00am to 5:00pm

PRODUCT NAME : DRYSPELL PLUS
MODEL : DRYSPELL PLUS 125
ITEM CODE : PD210 (without Cover & Includes external Pre - Filter)

1. SPECIFICATIONS

Flow : 125 scfm
Maximum Operating Pressure : 16 bar (g) (232 PSI (g))
Rated Air Inlet Temperature : 38° C (100° F) (ISO:7183-1986 (E)) rated Dewpoint
Rated Operating Pressure : 7 bar (g) (101.5 PSI (g))
Recommended External Pre-Filter Rating: 0.01 Microns (ISO: 8573-1:2010 (E) Class 1)
Cycle Time : 4 Minutes
Operating Voltage : 100-240 VAC 50/60 Hz 1 Ph
Dew Point : -40° C (-40° F) PDP (ISO: 8573-1:2010 (E) Class 2)
End Connections : 1" NPT
Purge Loss : 15±1%
Noise Level : <70 dBA
Pressure Drop : <0.3 bar (g) (<4.3 PSI (g))

2. TECHNICAL DATA

2.1 ADSORBER DATA

Type of adsorbent : Mixed Bed of Activated Alumina & Molecular Sieves
Adsorber Shell : Aluminum IS 63400
Top & Bottom Block : Aluminum IS 63400

2.2 PROCESS DATA

Description	Purge Optimizer			
	100%	80%	60%	40%
Cycle Time (min)	4	4	4	4
Drying Time (min)	2	2	2	2
Regeneration Time (Sec)	90	72	54	36
De-pressurization time (sec)	30	48	66	84

3. FILTER DATA

3.1 Standard with all units

Internal Built In After Filter Micron Rating : 25 Micron (ISO:8573-1:2010 (E) Class 5)

PneumaticPlus

PneumaticPlus reserves the right to change products or specifications without notice

3.2 Included with Item Code PD210

External Pre-Filter Particle Removal Rating	: 0.01 Micron (ISO:8573-1:2010 (E) Class 1)
Pre- Filter Oil Removal Rating	: 0.01 mg/m ³ (ISO:8573-1:2010 (E) Class 1)
Filtering Media	: Borosilicate Microfiber Glass
Efficiency	: 99.9%

3.3 Optional for all Units

External Post- Filter Particle Removal Rating	: 1 micron (ISO:8573-1:2010 (E) Class 2)
Post-Filter Oil Removal Rating	: 0.5 mg/m ³ (ISO:8573-1:2010 (E) Class 3)

4. ELECTRICAL DATA

Controller	: Custom Made Micro-Processor Based
Make	: Trident
Input Voltage	: 100-240 VAC 50/60 Hz 1 Ph
Output	: 24VDC
Display	: LED Indication for Drying, Re-Pressurization & Drain
Enclosure	: IP55 Protection
Certification	: cUL USA Marking

Dew Point Stretch Cycle:

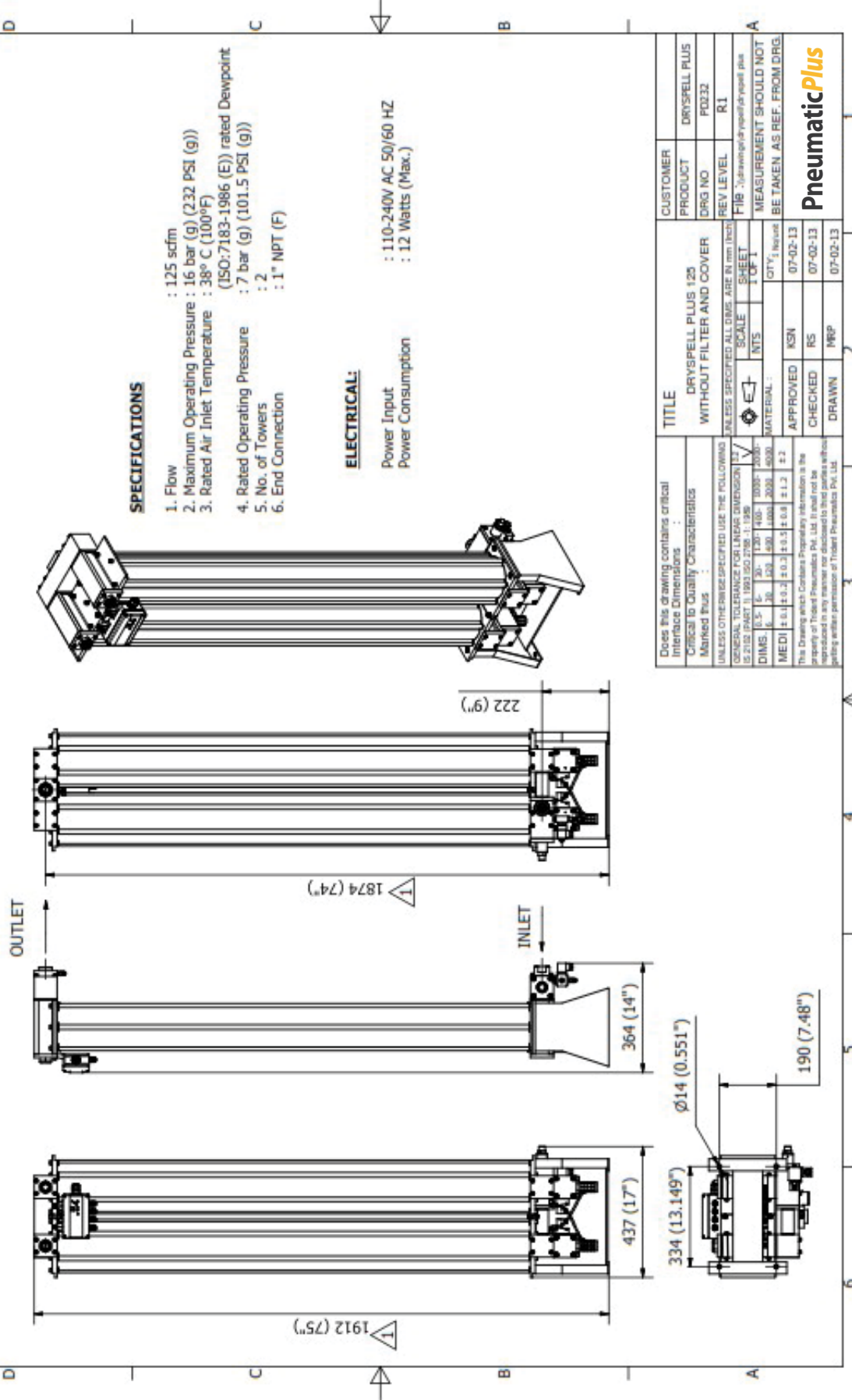
It stretches the moisture loading time of the desiccant bed by increasing the drying time. A dew point meter at the outlet with a required dew point setting provides the signal for the stretch cycle. This reduces the purge air in accordance to the air flow and dewpoint chosen. The purge occurs for the preprogrammed time during this time.

Purge Optimizer:

It reduces the percentage of regeneration flow based on the front panel setting. It has 4 options 40%, 60%, 80% & 100% purge optimization cycles respectively. The settings correspond to flow or moisture load through the dryer.

Separate LED Indicators for Tower Status, Purge Optimizer & Condensate Drain

INSTRUCTIONS		REV.No	Date	Details of Revision	ECN Ref.	Appd. By
REMARKS	REVISION					
REWORKING Inspection Plan	REV 03 TYPE: (CHANGED)	0 - 1	25-02-13	Height changed 1807 (71") changed to 1874 (74") and 1845 (73") changed to 1912 (75")	597	RS

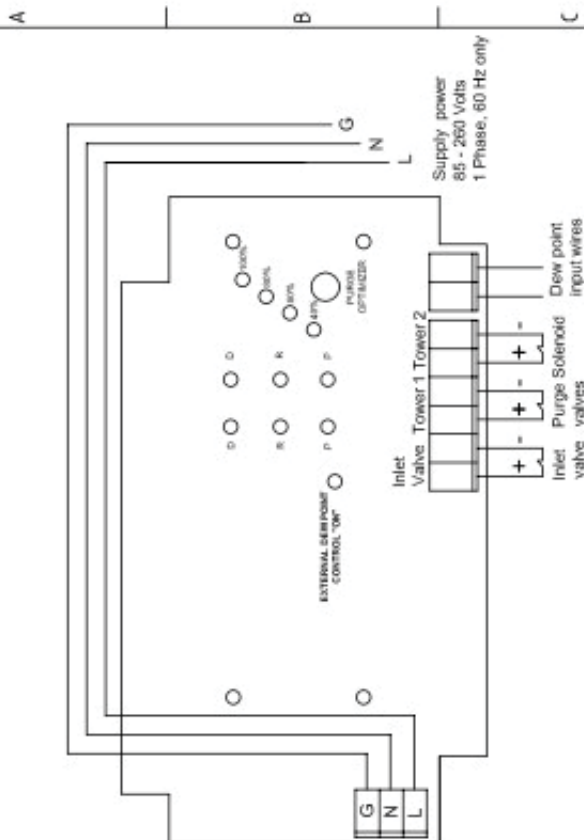
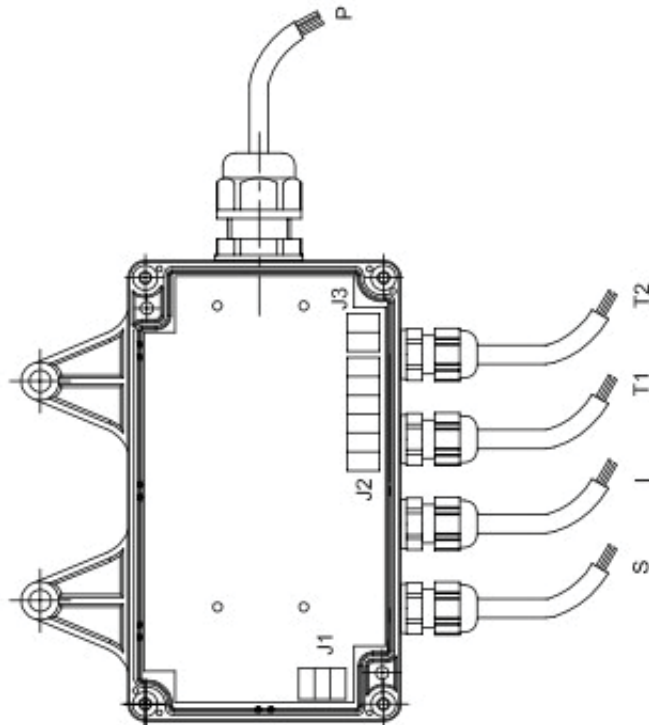


Does this drawing contains critical Interface Dimensions :		TITLE		CUSTOMER	
Critical to Quality Characteristics		DRYSPELL PLUS 125 WITHOUT FILTER AND COVER		PRODUCT	
Marked Thus :		SCALE		DRG NO	
UNLESS OTHERWISE SPECIFIED USE THE FOLLOWING		NTS		REV LEVEL	
GENERAL TOLERANCE FOR LINEAR DIMENSION		1 OF 1		R1	
IS 2115 (PART 1) 1993 ISO 2768 - 1:1998		MATERIAL :		MEASUREMENT SHOULD NOT BE TAKEN AS REF. FROM DRG	
DIMES		APPROVED		DRAWN	
F. 0.5 ± 0.1		RS		MRP	
M. 0.2 ± 0.1		07-02-13		07-02-13	
MED. 0.1 ± 0.05		07-02-13		07-02-13	
This Drawing which Contains Proprietary Information is the property of Triolent Pneumatics Pvt. Ltd. It shall not be reproduced in any manner nor disclosed to third parties without getting written permission of Triolent Pneumatics Pvt. Ltd.		PneumaticPlus			

CONTROLLER ELECTRICAL DIAGRAM

Note:

- P - Power
- T1 - Tower 1 Solenoid wire
- T2 - Tower 2 Solenoid wire
- I - Inlet Valve
- S - Dew point switching input wire



Econo Mode : Dew point 'good' contact closed
Run Mode : Contact open
Dryer will stop switching towers and purge air until contacts are open (Dew point poor)

Does this drawing contain critical dimensions : Critical to Quality Characteristics Marked True :	TITLE	CUSTOMER
	CONTROLLER DS31-200	PRODUCT
	ELECTRICAL	DRG NO
	UNLESS OTHERWISE SPECIFIED USE THE FOLLOWING	REV LEVEL
GENERAL TOLERANCES FOR LINEAR DIMENSION	SCALE	SHEET
FRACTIONS: 1/16, 1/8, 3/16, 1/2, 3/4, 1, 1 1/2, 2, 3, 4, 5, 6, 8, 10, 12, 16, 20, 24, 30, 36, 48, 60, 72, 96, 120, 144, 180, 216, 240, 288, 360, 432, 480, 576, 720, 864, 1080, 1296, 1440, 1728, 2160, 2592, 2880, 3456, 4320, 5184, 6048, 7296, 8640, 10368, 12288, 14745, 17712, 21216, 25344, 30240, 36288, 43632, 52416, 62784, 75936, 91200, 109440, 131776, 158336, 190336, 228960, 274304, 327456, 398592, 488832, 599232, 729856, 891776, 1084992, 1319616, 1606752, 1957440, 2382720, 2893824, 3501888, 4218176, 5064704, 6063488, 7236672, 8698368, 10480896, 12615296, 15132736, 18163200, 21848832, 26231680, 30737280, 35442880, 40454400, 45772800, 51408000, 57359360, 63525760, 69907200, 76503680, 83315200, 90341760, 97583360, 105040000, 112711680, 120598400, 128699200, 136914240, 145343520, 153987040, 162844800, 171916960, 181193440, 190674240, 199359360, 208253760, 217357440, 226670400, 236192640, 245924160, 255865000, 265915200, 276074720, 286343520, 296721600, 307208960, 317805440, 328511040, 339325760, 350249600, 361282720, 372425040, 383676480, 395036960, 406506400, 418084800, 429772160, 441568480, 453473760, 465487920, 477610880, 489842640, 502183200, 514632560, 527190720, 539857760, 552633600, 565518240, 578511680, 591613920, 604825040, 618144960, 631573680, 645111120, 658757280, 672512000, 686375360, 699347360, 712428000, 725617280, 738915200, 752321920, 765837280, 779461280, 793193920, 807035200, 820985120, 835043680, 849210880, 863486720, 877871200, 892364160, 906965600, 921675520, 936493920, 951420800, 966456160, 981599920, 996852160, 1012212800, 1027681920, 1043259520, 1058945600, 1074739200, 1090641280, 1106651840, 1122770880, 1138998400, 1155334400, 1171778880, 1188331840, 1204993280, 1221762240, 1238639680, 1255625600, 1272719920, 1289932640, 1307253760, 1324683200, 1342220960, 1359867040, 1377621440, 1395484160, 1413455200, 1431534560, 1449722240, 1467918240, 1486222560, 1504635200, 1523156160, 1541784320, 1560520640, 1579365120, 1598317760, 1617378560, 1636547520, 1655824640, 1675208960, 1694699520, 1714296320, 1733999360, 1753808640, 1773724160, 1793745840, 1813873600, 1834007424, 1854247296, 1874593216, 1895045184, 1915603200, 1936267264, 1957037280, 1977913248, 1998895168, 2019983040, 2041076864, 2062276608, 2083482272, 2104693840, 2125911312, 2147134688, 2168363968, 2189599136, 2210840192, 2232087136, 2253339968, 2274598688, 2295863280, 2317133744, 2338409072, 2359689264, 2380974312, 2402264224, 2423559008, 2444858656, 2466163168, 2487472544, 2508786784, 2529995888, 2551209856, 2572428688, 2593652384, 2614880944, 2636114368, 2657352640, 2678595776, 2699843776, 2721096640, 2742354368, 2763616864, 2784884128, 2806156144, 2827432928, 2848714464, 2869999760, 2891288816, 2912581632, 2933878208, 2955178544, 2976482640, 2997790496, 3019092000, 3040397264, 3061706288, 3083019072, 3104335616, 3125654912, 3146977968, 3168303776, 3189632336, 3210963648, 3232297712, 3253634528, 3274974080, 3296316384, 3317661440, 3338909248, 3359959664, 3381012688, 3402068320, 3423126560, 3444187408, 3465250864, 3486316928, 3507385592, 3528456864, 3549529728, 3570604184, 3591680232, 3612757872, 3633837104, 3654917936, 3675999360, 3697081376, 3718164880, 3739249872, 3760336344, 3781424288, 3802513696, 3823604560, 3844696880, 3865789632, 3886883808, 3907979392, 3929076384, 3950174784, 3971274592, 3992375792, 4013478288, 4034582080, 4055687168, 4076793552, 4097899232, 4118995200, 4140091456, 4161188000, 4182284832, 4203381952, 4224479360, 4245577056, 4266675040, 4287773392, 4308872096, 4329971136, 4350970512, 4371970224, 4392970272, 4413970656, 4434971376, 4455972432, 4476973824, 4497975536, 4518977568, 4539979912, 4560982576, 4581985456, 4602988560, 4623991888, 4644995424, 4665999176, 4686993136, 4707987304, 4728981680, 4749976272, 4770971072, 4791966080, 4812961296, 4833956720, 4854952368, 4875948224, 4896944296, 4917940576, 4938936960, 4959933456, 4980929968, 5001926592, 5022923328, 5043919968, 5064916624, 5085913296, 5106909984, 5127906688, 5148903392, 5169899904, 5190896320, 5211892640, 5232888864, 5253884992, 5274881024, 5295877056, 5316873088, 5337869120, 5358865152, 5379861184, 5400857216, 5421853248, 5442849280, 5463845312, 5484841344, 5505837376, 5526833408, 5547829440, 5568825472, 5589821504, 5610817536, 5631813568, 5652809600, 5673805632, 5694801664, 5715797696, 5736793728, 5757789760, 5778785792, 5799781824, 5820777856, 5841773888, 5862769920, 5883765952, 5904761984, 5925758016, 5946754048, 5967750080, 5988746112, 6009742144, 6030738176, 6051734208, 6072730240, 6093726272, 6114722304, 6135718336, 6156714368, 6177710400, 6198706432, 6219702464, 6240698496, 6261694528, 6282690560, 6303686592, 6324682624, 6345678656, 6366674688, 6387670720, 6408666752, 6429662784, 6450658816, 6471654848, 6492650880, 6513646912, 6534642944, 6555638976, 6576635008, 6597631040, 6618627072, 6639623104, 6660619136, 6681615168, 6702611200, 6723607232, 6744603264, 6765599296, 6786595328, 6807591360, 6828587392, 6849583424, 6870579456, 6891575488, 6912571520, 6933567552, 6954563584, 6975559616, 6996555648, 7017551680, 7038547712, 7059543744, 7080539776, 7101535808, 7122531840, 7143527872, 7164523904, 7185519936, 7206515968, 7227511992, 7248508016, 7269504040, 7290500064, 7311496080, 7332492096, 7353488112, 7374484128, 7395480144, 7416476160, 7437472176, 7458468192, 7479464208, 7500460224, 7521456240, 7542452256, 7563448272, 7584444288, 7605440304, 7626436320, 7647432336, 7668428352, 7689424368, 7710420384, 7731416400, 7752412416, 7773408432, 7794404448, 7815400464, 7836396480, 7857392496, 7878388512, 7899384528, 7920380544, 7941376560, 7962372576, 7983368592, 8004364608, 8025360624, 8046356640, 8067352656, 8088348672, 8109344688, 8130340704, 8151336720, 8172332736, 8193328752, 8214324768, 8235320784, 8256316800, 8277312816, 8298308832, 8319304848, 8340300864, 8361296880, 8382292896, 8403288912, 8424284928, 8445280944, 8466276960, 8487272976, 8508268992, 8529265008, 8550261024, 8571257040, 8592253056, 8613249072, 8634245088, 8655241104, 8676237120, 8697233136, 8718229152, 8739225168, 8760221184, 8781217200, 8802213216, 8823209232, 8844205248, 8865201264, 8886197280, 8907193296, 8928189312, 8949185328, 8970181344, 8991177360, 9012173376, 9033169392, 9054165408, 9075161424, 9096157440, 9117153456, 9138149472, 9159145488, 9180141504, 9201137520, 9222133536, 9243129552, 9264125568, 9285121584, 9306117600, 9327113616, 9348109632, 9369105648, 9390101664, 9411097680, 9432093696, 9453089712, 9474085728, 9495081744, 9516077760, 9537073776, 9558069792, 9579065808, 9600061824, 9621057840, 9642053856, 9663049872, 9684045888, 9705041904, 9726037920, 9747033936, 9768029952, 9789025968, 9810021984, 9831017992, 9852014000, 9873010016, 9894006032, 9915002048, 9936000064, 9957000080, 9978000096, 9999000112, 1001999968, 1004099920, 1006199872, 1008299824, 1010399776, 1012499728, 1014599680, 1016699632, 1018799584, 1020899536, 1022999488, 1025099440, 1027199392, 1029299344, 1031399296, 1033499248, 1035599200, 1037699152, 1039799104, 1041899056, 1043999008, 1046098960, 1048198912, 1050298864, 1052398816, 1054498768, 1056598720, 1058698672, 1060798624, 1062898576, 1064998528, 1067098480, 1069198432, 1071298384, 1073398336, 1075498288, 1077598240, 1079698192, 1081798144, 1083898096, 1085998048, 1088098000, 1090197952, 1092297904, 1094397856, 1096497808, 1098597760, 1100697712, 1102797664, 1104897616, 1106997568, 1109097520, 1111197472, 1113297424, 1115397376, 1117497328, 1119597280, 1121697232, 1123797184, 1125897136, 1127997088, 1130097040, 1132196992, 1134296944, 1136396896, 1138496848, 1140596800, 1142696752, 1144796704, 1146896656, 1148996608, 1151096560, 1153196512, 1155296464, 1157396416, 1159496368, 1161596320, 1163696272, 1165796224, 1167896176, 1169996128, 1172096080, 1174196032, 1176295984, 1178395936, 1180495888, 1182595840, 1184695792, 1186795744, 1188895696, 1190995648, 1193095600, 1195195552, 1197295504, 1199395456, 1201495408, 1203595360, 1205695312, 1207795264, 1209895216, 1211995168, 1214095120, 1216195072, 1218295024, 1220394976, 1222494928, 1224594880, 1226694832, 1228794784, 1230894736, 1232994688, 1235094640, 1237194592, 1239294544, 1241394496, 1243494448, 1245594400, 1247694352, 1249794304, 1251894256, 1253994208, 1256094160, 1258194112, 1260294064, 1262394016, 1264493968, 1266593920, 1268693872, 1270793824, 1272893776, 1274993728, 1277093680, 1279193632, 1281293584, 1283393536, 1285493488, 1287593440, 1289693392, 1291793344, 1293893296, 1295993248, 1298093200, 1300193152, 1302293104, 1304393056, 1306493008, 1308592960, 1310692912, 1312792864, 1314892816, 1316992768, 1319092720, 1321192672, 1323292624, 1325392576, 1327492528, 1329592480, 1331692432, 1333792384, 1335892336, 1337992288, 1340092240, 1342192192, 1344292144, 1346392096, 1348492048, 1350592000, 1352691952, 1354791904, 1356891856, 1358991808, 1361091760, 1363191712, 1365291664, 1367391616, 1369491568, 1371591520, 1373691472, 1375791424, 1377891376, 1379991328, 1382091280, 1384191232, 1386291184, 1388391136, 1390491088, 1392591040, 1394690992, 1396790944, 1398890896, 1400990848, 1403090800, 1405190752, 1407290704, 1409390656, 1411490608, 1413590560, 1415690512, 1417790464, 1419890416, 1421990368, 1424090320, 1426190272, 1428290224, 1430390176, 1432490128, 1434590080, 1436690032, 1438790000, 1440890000, 1442990000, 1445090000, 1447190000, 1449290000, 1451390000, 1453490000, 1455590000, 1457690000, 1459790000, 1461890000, 1463990000, 1466090000, 1468190000, 1470290000, 1472390000, 1474490000, 1476590000, 1478690000, 1480790000, 1482890000, 1484990000, 1487090000, 1489190000, 1491290000, 1493390000, 1495490000, 1497590000, 1499690000, 1501790000, 1503890000, 1505990000, 1508090000, 1510190000, 1512290000, 1514390000, 1516490000, 1518590000, 1520690000, 1522790000, 1524890000, 1526990000, 1529090000, 1531190000, 1533290000, 1535390000, 1537490000, 1539590000, 1541690000, 1543790000, 1545890000, 1547990000, 1550090000, 1552190000, 1554290000, 1556390000, 1558490000, 1560590000, 1562690000, 1564790000, 1566890000, 1568990000, 1571090000, 1573190000, 1575290000, 1577390000, 1579490000, 1581590000, 1583690000, 1585790000, 1587890000, 1589990000, 1592090000, 1594190000, 1596290000, 1598390000, 1600490000, 1602590000, 1604690000, 1606790000, 1608890000, 1610990000, 1613090000, 1615190000, 1617290000, 1619390000, 1621490000, 1623590000, 1625690000, 1627790000, 1629890000, 1631990000, 1634090000, 1636190000, 1638290000, 1640390000, 1642490000, 1644590000, 1646690000, 1648790000, 1650890000, 1652990000, 1655090000, 1657190000, 1659290000, 1661390000, 1663490000, 1665590000, 1667690000, 1669790000, 1671890000, 1673990000, 1676090000, 1678190000, 1680290000, 1682390000, 1684490000, 1686590000, 1688690000, 1690790000, 1692890000, 1694990000, 1697090000, 1699190000, 1701290000, 1703390000, 1705490000, 1707590000, 1709690000, 1711790000, 1713890000, 1715990000, 1718090000, 1720190000, 1722290000, 1724390000, 1726490000, 1728590000, 1730690000, 1732790000, 1734890000, 1736990000, 1739090000, 1741190000, 1743290000, 1745390000, 1747490000, 1749590000, 1751690000, 1753790000, 1755890000, 1757990000, 1760090000, 1762190000, 1764290000, 1766390000, 1768490000, 1770590000, 1772690000, 1774790000, 1776890000, 1778990000, 1781090000, 1783190000, 1785290000, 1787390000, 1789490000, 1791590000, 1793690000, 1795790000, 1797890000, 1799990000, 1802090000, 1804190000, 1806290000, 1808390000, 1810490000, 1812590000, 1814690000, 1816790000, 1818890000, 1820990000, 1823090000, 1825190000, 1827290000, 1829390000, 1831490000, 1833590000, 1835690000, 1837790000, 1839890000, 1841990000, 1844090000, 1846190000, 1848290000, 1850390000, 1852490000, 1854590000, 1856690000, 1858790000, 1860890000, 1862990000, 1865090000, 1867190000, 1869290000, 1871390000, 1873490000, 1875590000, 1877690000, 1879790000, 1881890000, 1883990000, 1886090000, 1888190000, 1890290000, 1892390000, 1894490000, 1896590000, 1898690000, 1900790000, 1902890000, 1904990000, 1907090000, 1909190000, 1911290000, 1913390000, 1915490000, 1917590000, 1919690000, 1921790000, 1923890000, 1925990000, 1928090000, 1930190000, 1932290000, 1934390000, 1936490000, 1938590000, 1940690000, 1942790000, 1944890000, 1946990000, 1949090000, 1951190000, 1953290000, 1955390000, 195		