

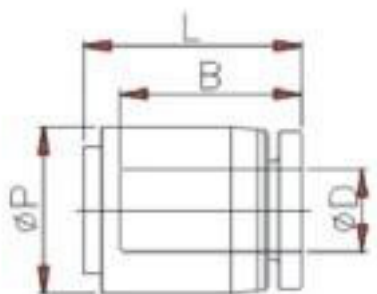
Push to Connect Fitting - Cap (PPF)

Inch Tube Specifications (Refer to Diagram Below)

MODEL	ΦD	ΦP	L	B
PPF 5/32	5/32	11	18.4	15.9
PPF 3/16	3/16	12	19	16.0
PPF 1/4	1/4	13	21.3	18.8
PPF 5/16	5/16	15	25.1	22.7
PPF 3/8	3/8	18	26	23.5
PPF 1/2	1/2	20	27.5	25.1

**All Whole Numbers = Millimeter (MM)

Diagram - Cap (PPF)



Metric Tube Specifications (Refer to Diagram Above)

MODEL	ΦD	ΦP	L	B
PPF 04	4	11	18.4	15.9
PPF 06	6	13	19.4	16.9
PPF 08	8	15	21.3	18.8
PPF 10	10	18	25.1	22.7
PPF 12	12	20	26	23.5
PPF 16	16	26	27.5	25.1

**All Whole Numbers = Millimeter (MM)